



Rotary International District 9320
District Governor 2006-2007 Ethne Papenfus

in District 9320

Monthly Newsletter
March 2007

LITERACY MONTH

From the Desk of the DG: ?

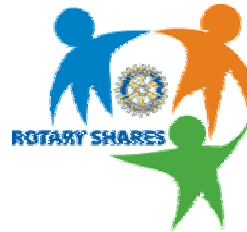
From this year, Literacy Month moves to March. It is pleasing to see that almost all the Clubs in D9320 support a Literacy project of one type or another, from teaching reading skills to supporting school libraries, sometimes with support from other Districts, both in SA and overseas.

Rather appropriately, Literacy Month will be followed by Magazine Month .

To those clubs who regularly e-mail their club bulletins to me, thank you for doing so. And, yes, I do try to find time to read them. If your club editor is not yet sending me your bulletin, please encourage him or her to do so.

The 2006-2007 Rotary year is moving rapidly to a close. Is your club on track for a Citation from the RI President? It was one of the District goals for every club to try to do so. How is your club doing?

Yours in Rotary



RI President Elect
Wilfred J.
Wilkinson launches
the Rotary Theme
for 2007-2008

Contents of this issue:

From the Desk of the DG	Page 1
Theme for 2007-2008	1
Donors and Benefactors Luncheon	1
Ann's' Corner	2
Rotary World Peace Fellowship	2
Group Study Exchange Committee	2
Attendance	2
Econo Globe Project	2
In Memoriam	2
Water Awareness Week	3
GSE Team to India	4
Baby Doll Project	4
Attendance Report	5

(On-line Editor Barry Downs)



PP Dries Lötter and PDG Trevor Long at a lunch for major donors and major benefactors to the Rotary Foundation, held at the Institute for Zone 10 in Istanbul in December 2006; with DG Ethne Papenfus.

Ann's' Corner

Hello everyone

I would like to take this opportunity to remind you all that POETS is almost upon us. The Presidents and Officers Elect Training Seminar will be held over the weekend of the 20th to 22nd April in Colesberg.

Although this training activity is primarily for incoming Rotary Presidents and Secretaries there will also be informative sessions for incoming Ann Presidents and Secretaries. However, POETS is open to everybody and anybody who is keen to learn about Rotary, what it is and how it works. Our sessions for the spouses will be interactive – plenty of questions and answers, and there will also be the opportunity to meet and discuss our similar concerns and ideas for the future in an atmosphere of informal fellowship.

As spouses we do not often have the opportunity to meet each other because this district is so widespread and POETS is the ideal opportunity to spend a weekend getting to know each other better, to discuss our interests and at the same time increase our knowledge of Rotary and the Ann organisation in D9320.

Regards,
Sheila

Rotary World Peace Fellowship

Do you know a non-Rotarian professional interested in pursuing a Master's Degree in peace building, conflict resolution, and mediation?

If you do, recommend him or her for a **Rotary World Peace Fellowship!** Each year, Rotary selects up to 60 Fellows to study peace and conflict resolution at one of the seven prestigious universities around the world. The program provides:

- Rotary-funded graduate study toward a master's degree at Rotary Centres – located at seven prestigious universities worldwide;
- Training in the root causes of conflict, theories of international relations, and effective models of cooperation as well as practical skills in conflict resolution and negotiation.
- A growing network of committed alumni employed around the world in diplomacy, government, non-governmental organizations and private corporations.

Application process and eligibility:

http://www.rotary.org/foundation/educational/amb_scho/centers/application/index.html#app2

Group Study Exchange Committee

Gavin Harris has been the Co-ordinator of the Inbound GSE teams for the past few years, and in this Rotary year organised the itineraries for the teams from Essex and Pennsylvania. It is no easy task, and we thank Gavin for all that he has done.

Unfortunately, a spell of ill health has made it impossible for Gavin to continue with this portfolio for the remainder of this year, and Karen de Jager has undertaken to make the arrangements for the in-coming Indian team.

Sincere appreciation to Gavin for all the work that he has done so willingly and so well, and our very best wishes for much better health for the future.

Rob Thorpe was the coordinator for the Outgoing GSE team to India, but changes in his career commitments have resulted in his having to resign from this task. Our thanks to Rob for the work that he has done. Again, Karen has stepped forward to assist with the team going to the USA.

To Karen, thank you for taking on yet another Rotary duty. We know that the programme will be in good hands.

Attendance

The Attendance report is available on the on-line version of the DG's newsletter.

Econo Globe Project

Clubs are reminded about the econo globe project, as explained at POETS and at Conference.

A brief reminder: decide on an old age home, school or children's home, and offer to replace their ordinary globes with more cost-effective econo globes.

Enquire from your local ESKOM office about acquiring the econo globes. Clubs that have done so have found that they have been able to obtain globes free of charge.

Please let the DG know how the project has been done by your club.

In Memoriam

Mitty Langley, a founder member of the Rotary Club of Stutterheim, passed away in January. Deepest sympathies to his widow, other members of the family, friends, and members of his club.

Water Awareness

A letter from the Rotary Club of Grahamstown Sunset, to all Clubs in the District:

Dear Fellow Rotarians of District 9320

We would like to invite all clubs in our District to join us in an effort to show that Rotary can *Lead the Way* on the important issue of **Water Awareness**. National Water Week takes place from 19-23 March 2007 and we should be part of it.

Below is a sample advertisement which your club can decide to insert in your local press, displaying your own club's name and logo. Or you might decide on a different Water Awareness advertisement more appropriate to your community. You could also attract a sponsor to help cover the costs.

By taking this step together we will:

- a) demonstrate **Rotary's concern for water conservation**
- b) **support** our government's **efforts to promote water awareness**
- c) **encourage** others – and ourselves! – to **save water**
- d) **act together as a District**, using the **united strength of Rotary**
- e) raise **public awareness of Rotary**.

We believe this is worth doing. If you decide to support this initiative, please drop our club a line at ghtsunset@imaginet.co.za and let us know, so we can measure the impact across the district.

Yours in Rotary

Laurence Wright

President, Rotary Club of Grahamstown Sunset

SAVING WATER IN OUR HOMES

WATER SAVING CAN BE AN ACTIVITY FOR THE WHOLE FAMILY FIRST! Find out how much water is being used at present.

Check your last three water bills and average the amount used and the money spent. Read your water meter once a week, write down the readings, and...

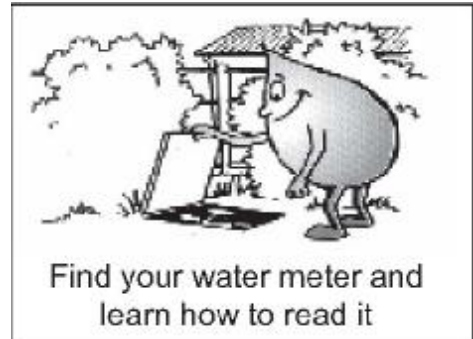
SEE HOW MUCH YOU CAN SAVE!

TIPS

- C** Put a plastic bucket in the bathroom to catch water. You can catch all the cold water that runs out of the taps before the hot water comes through.
- C** Always put the plug in before you turn the tap on. Do not keep the tap running while you are shaving, or brushing your teeth.
- C** Shower instead of bathing. Have smaller baths. Share your bath-water with other members of the family.
- C** When you shower, place a basin on the floor of the shower to catch most of the water. Put this water on your garden.
- C** In the shower, wet yourself, shut off the shower and soap yourself, then rinse off. This way you can reduce your water consumption by one and a half litres each time you shower. Add that together for a month = 45 litres!
- C** Place a plastic litre bottle filled with water in the toilet cistern to reduce the amount of water flushed each time. If you can afford it, replace your flush mechanism with a water-saving type.
- C** Save by using a bowl, which contains less water, in the kitchen sink. You can save up to 6 litres per day and you can easily water your garden with the washing-up water.
- C** If you have double sinks, half fill both sinks with water and use one to wash your dishes and the other to rinse them. The rinsing water can go on the garden. Make a herb garden at your back door for this water.
- C** Avoid rinsing dishes which are to be washed in the dishwasher. Scrape or wipe them with used paper napkins. Modern dishwashers do a thorough job of cleaning the crockery and cutlery.

Sponsored by the Rotary Club of

Material supplied by Umgeni Water, adapted by Lil Haigh, and used with permission.



GSE Team to India



Our GSE team has returned from India. From all accounts it was a most memorable and interesting experience. India seems to be a country of fantastic contrasts. Medieval in many ways, yet with cutting edge 21st century technology, working side by side. Very pleased to be back in South Africa, they will never complain about crowds, pot holes, dirty toilets, traffic again, they all found the time spent valuable as an insight into themselves. Though they were rather disappointed in the lack of planning for their trip by the District and the opportunities missed for vocational experiences, they all agree that India is certainly worth the time spent to visit.

The team was very surprised to meet up with Gordon and Kay Barker, visiting India from the Rotary Club of Grahamstown, while in Jaipur

In the Photo: Nicci Hayes, Norman Adams, Gordon & Kay Barker, Garth Cambray and Niel van Niekerk

(Picture taken by Derryck Jordan)

A Message from the DG of the District in India which hosted our team:

*Dear Rtn Gov Madam Ethne Papenfus,
Last evening your team has left back home, i congratulate your GSE Selection Committee for selecting such a wonderful team which has won our hearts by their wisdom, affection and behaviour. Leader of the team Rtn. Norman (asstt Governor) proved to be a true leader and we all appreciate his devotion to the Rotary Movement. We wish him every success for cause of Rotary.
Dear Madam our district consist of small towns where your team might have faced inconvenience for which i beg to be excused.*

Rtn.M.S.Jain
Distt Gov RI

Rtn PP.Sushil Jain
Chairman Host Committee

Well done to our team.

Baby Doll Project

The Baby Doll Project is being funded and administered by The Rotary Club of East London and the recipients of the items collected by this project will be 'The Caring Hearts'.

The plan is to circulate the doll, Faith Ethne (*thanks for the honour, East London; DG Ethne*), to all the schools in East London which are willing to assist in appealing to the learners to each contribute in a small way to those less fortunate than themselves, and to create awareness of the plight of those who are affected by HIV and the many orphans that have innocently become the victims as a result of this situation.

The doll will spend two weeks in each classroom before moving on, until she has visited each classroom in the school. The Rotarian "Mother" will keep in close contact telephonically with the person in charge at each school to monitor the doll's progress and to collect all the contributions regularly to take the responsibility off the class teachers as far as possible.

When the doll has completed her tour of the whole school, she will be collected and taken to the next school.

We thank, in advance, all who participate in our project for without you, we will be unable to proceed or succeed, and we hope that your learners will embrace this opportunity to do something for these needy children.



From Rtn Heather Sparg: *Clarendon Primary School invited me to address the whole school at a special assembly as their guest speaker, so I was able to speak about Rotary with a little history about Rotary and then introduced them to our doll.*

In the photo: Teacher Myra Birch (on the left), with learners of the school, receiving our Faith Ethne, Rtn Heather Sparg (on the right)

Thank you, Rotary Club of East London.

ROTARY DISTRICT 9320 ATTENDANCE RECORD 2006-2007

CLUB	OCT			NOV			DEC			JAN		
	%	Mem	Meet.	%	Mem	Meet.	%	Mem	Meet.	%	Mem	Meet.
Algoa Bay	80.7	61	5	92.9	61	4	86.7	61	2	80.0	61	3
Aliwal North	87.1	14	5	80.4	14	4	82.7	14	3	90.5	14	3
Arcadia	93.4	38	5	99.5	38	4	89.1	39	3	85.8	39	4
Beacon Bay	73.1	28	4	74.8	28	5	74.1	28	2	60.3	27	3
Bethlehem										80.0		4
Bloemfontein	68.0	16	3				36.7	16	2	56.7	15	4
Bonza Bay	96.9	24	5	96.0	26	4	84.6	26	3	77.0	26	5
Bothaville	75.0	8	4	78.0	9	4	88.0	9	2			
Colesberg												
Cradock	90.0	10	3	76.0	10	3	90.0	10	3			
De Aar	87.0	10	4	90.0	9	4				100.0	8	5
East London	76.4	55	4	85.3	55	4	71.8	55	4	77.8	54	3
Ficksburg	69.6	17	4									
Flamingo	76.4	22	5	77.3	22	4	71.2	22	3	86.4	22	4
Gately	64.0	39	5	81.0	39	4	71.0	39	2	77.0	39	3
Goldfields Sunset	96.7	26	5	90.3	26	4	84.5	25	2	68.5	25	4
Gonubie	75.0	27	5	64.0	27	4	73.0	27	2	74.0	27	4
Graaff-Reinet										100.0	7	4
Grahamstown	73.0	37	4	78.3	38	5	61.3	36	3	58.3	35	4
Grahamstown Sunset	68.0	35	5	74.0	35	4	59.0	35	4	62.0	35	3
Harrismith	67.0	19	4	90.5	17	4	82.3	17	2	93.3	10	3
Imperani	68.3	15	4	90.0	14	5	73.8	14	3	75.0	12	3
Jeffreys Bay	83.0	14	5	85.0	13	4	88.0	13	2	85.0	13	4
Kimberley												
Kimberley South	83.3	30	4	72.5	30	4	76.7	30	3	71.7	30	4
King Williams Town	38.6	21	4	77.3	21	5	31.8	21	2	61.4	23	4
Klerksdorp	91.5	43	4	82.4	41	5	69.8	41	3	87.5	40	3
Kroonstad	70.7	19	5	87.5	19	4	78.6	19	3	83.6	21	5
Ladybrand	96.9	17	2	87.8	17	5	74.5	18	4	90.0	20	4
Lukhanji Sunset				75.0	18	4	67.5	18	2	68.5	18	3
Maloti	74.0	25	3	78.0	25	4	68.0	25	3	71.2	25	5
Maseru	56.0	20	5	31.3	20	4						
Odendaalsrus	69.0	12	4	68.0	12	5	58.0	12	4			
Orkney	66.0	19	5	68.0	19	4	63.0	19	3			
Parys	100.0	8	5	90.6	8	4	87.5	8	4	56.3	8	4
Port Alfred	85.4	33	5	75.0	33	4	78.4	34	3	78.8	34	5
Port Elizabeth	56.0	50	4	67.0	51	4	58.0	51	2	63.0	50	3
PE East	75.0	17	4	69.0	17	4	61.0	17	3			
PE South	81.7	15	5	77.0	15	4	77.1	15	3	77.1	17	4
PE Sunrise	71.1	19	4	67.1	19	4	87.0	18	4	74.1	18	4
PE West	79.0	30	4	80.0	23	4	81.0	26	2			
Potchefstroom	50.0	36	4	64.0	36	5	50.3	36	2	55.6		4
Potchefstroom Mooi	83.8	16	5	82.8	16	4	85.2	18	3	83.3	18	4
Queenstown	69.5	29	4	63.8	29	3	60.8	29	1	65.7	29	2
Raadzaal	78.5	14	5	68.5	14	4	54.0	12	2	74.9	12	3
Stutterheim	96.5	15	4	98.6	15	5	87.8	15	4	90.3	14	3
Uitenhage	58.3	15	4	59.3	14	5	60.7	14	2	59.6	14	4
Uitenhage South	87.8	29	5	97.3	29	4	75.0	29	2	88.7	28	3
Viljoenskroon	94.9	28	5	90.4	28	4	84.6	28	3	91.1	30	4
Vryburg	90.0	10	5	85.0	10	4	75.0	10	2	67.5	10	4
Welkom	82.0	11	4	95.5	11	4	76.6	11	3	91.0	11	3